

City of Cupertino Local Road Safety Plan

Safe Routes to School Working Group
Meeting, February 9, 2022

Public Works – Transportation Division
Prashanth Dullu, Assistant Civil Engineer



Local Road Safety Plan (LRSP)

Background:

- Funded by the Federal Highway Administration (FHWA) and the California Department of Transportation (Caltrans).
- 90% covered by State grant.
- Requirement for City of Cupertino to be eligible to receive federal funding for local roadway safety improvement projects in the future.

Local Road Safety Plan (LRSP)

What and Why:

- LRSP will enable the City to enhance traffic safety for all modes of transportation and for all ages and abilities.
- **Identify, analyze, and prioritize** roadway safety improvements on local roads to reduce fatal and severe injury collisions.
- Plan will consider engineering and non engineering strategies - 4E's of traffic safety (Engineering, Enforcement, Education, and Emergency Medical Services).
- Provides us a toolbox of proven countermeasures.

Local Road Safety Plan (LRSP)

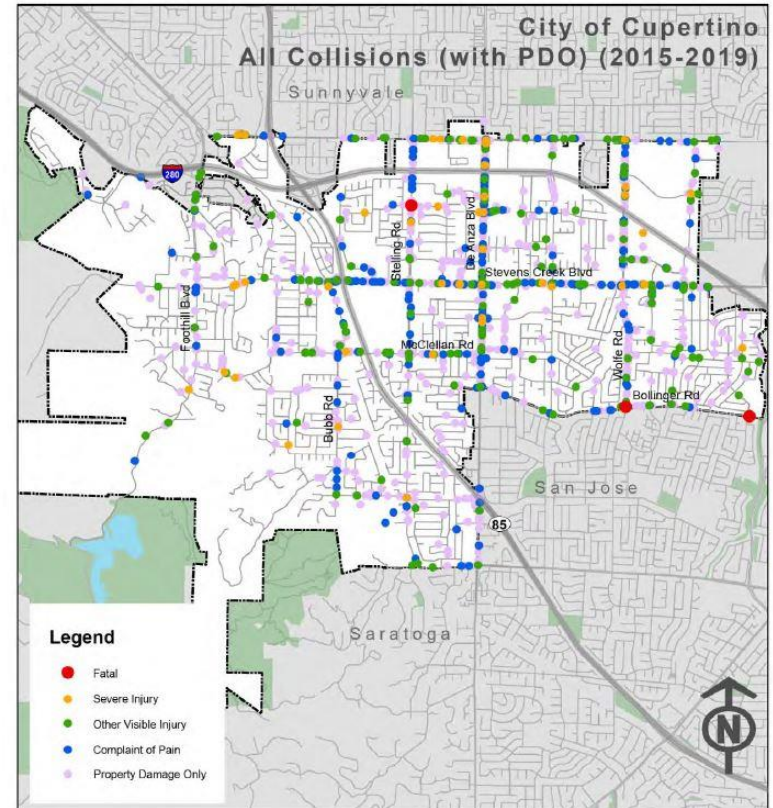
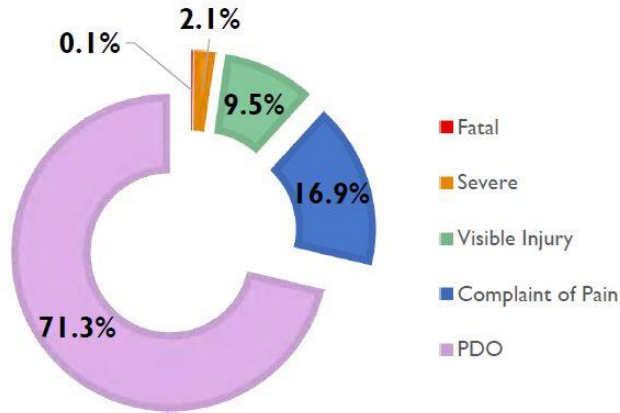
Plan will provide:

- List of safety improvement projects at high risk:
 - Intersections,
 - Roadway segments,
- Includes Pedestrian and Bicycle safety improvements.
- Identification of prospective funding sources for the proposed improvement projects.
- Live/Updateable document.

Stake Holders

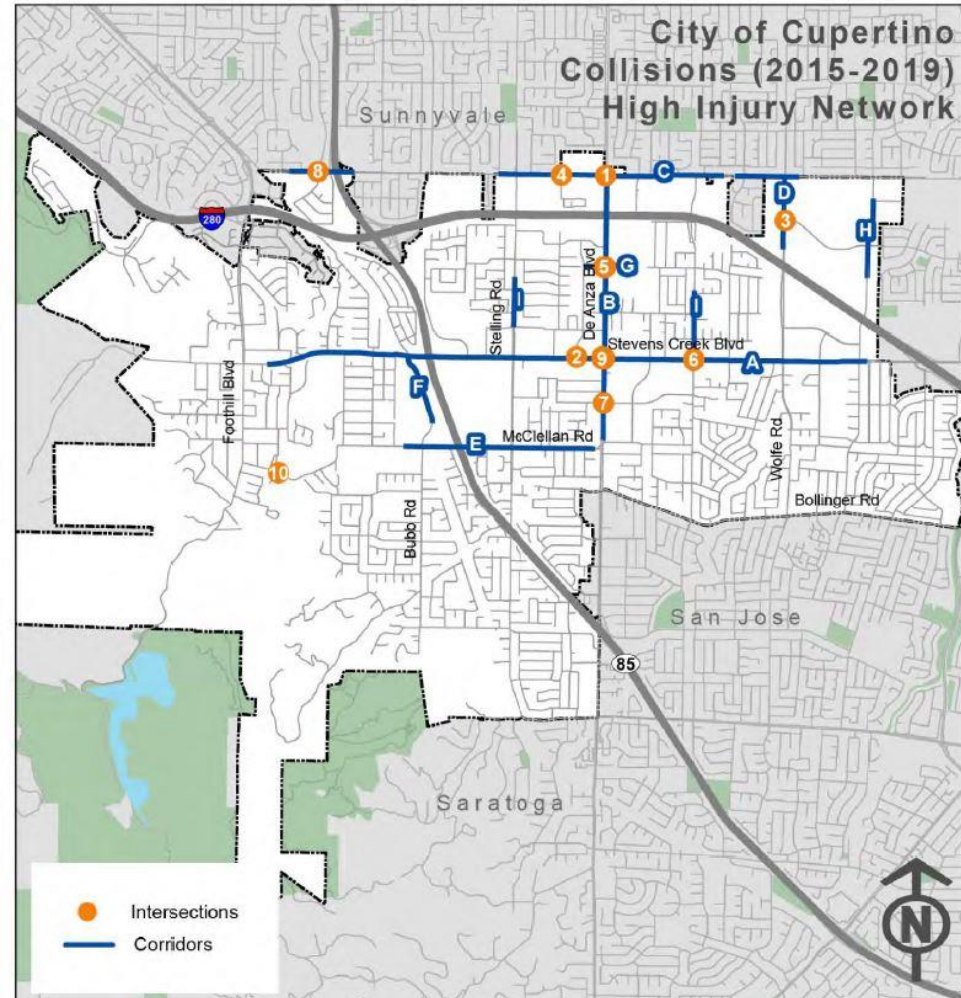
- City staff:
 - Public Works, Planning & Public Outreach Representative.
- County Sheriff Department.
- County Fire Department.
- Bicycle and Pedestrian Committee.
- CUSD and FUSD.
- Walk Bike Cupertino.
- Community Input (Community meetings/project website)

ANALYSIS FINDINGS (2015 – 2019): ALL COLLISIONS



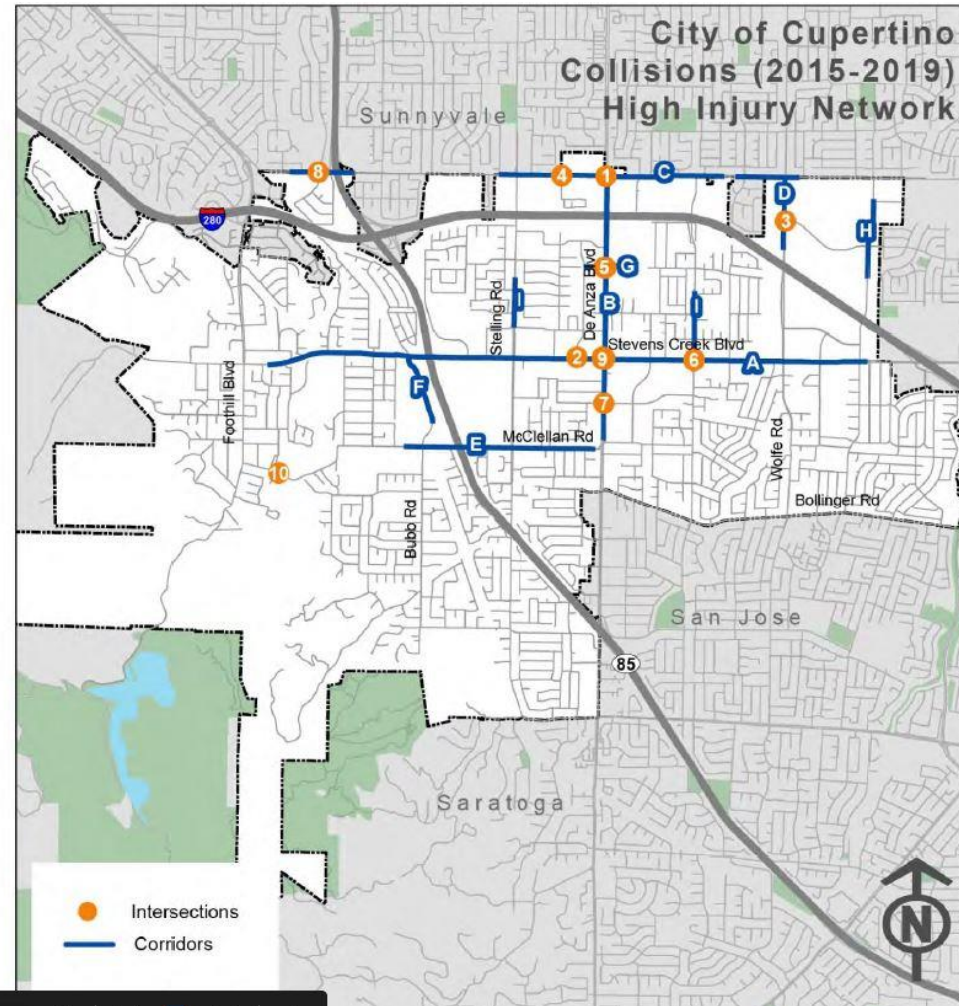
HIGH-RISK INTERSECTIONS

ID	Intersection
1	De Anza Blvd and Homestead Rd
2	Bandley Dr and Stevens Creek Blvd
3	Prunridge Ave and Wolfe Ave
4	Franco Ct/Forge Way and Homestead Rd
5	De Anza Blvd and Mariani Ave
6	Blaney Ave and Stevens Creek Blvd
7	S De Anza Blvd and Rodrigues Ave
8	Barranca Dr and Homestead Rd
9	De Anza Blvd and Stevens Creek Blvd
10	McClellan Rd and Clubhouse Ln

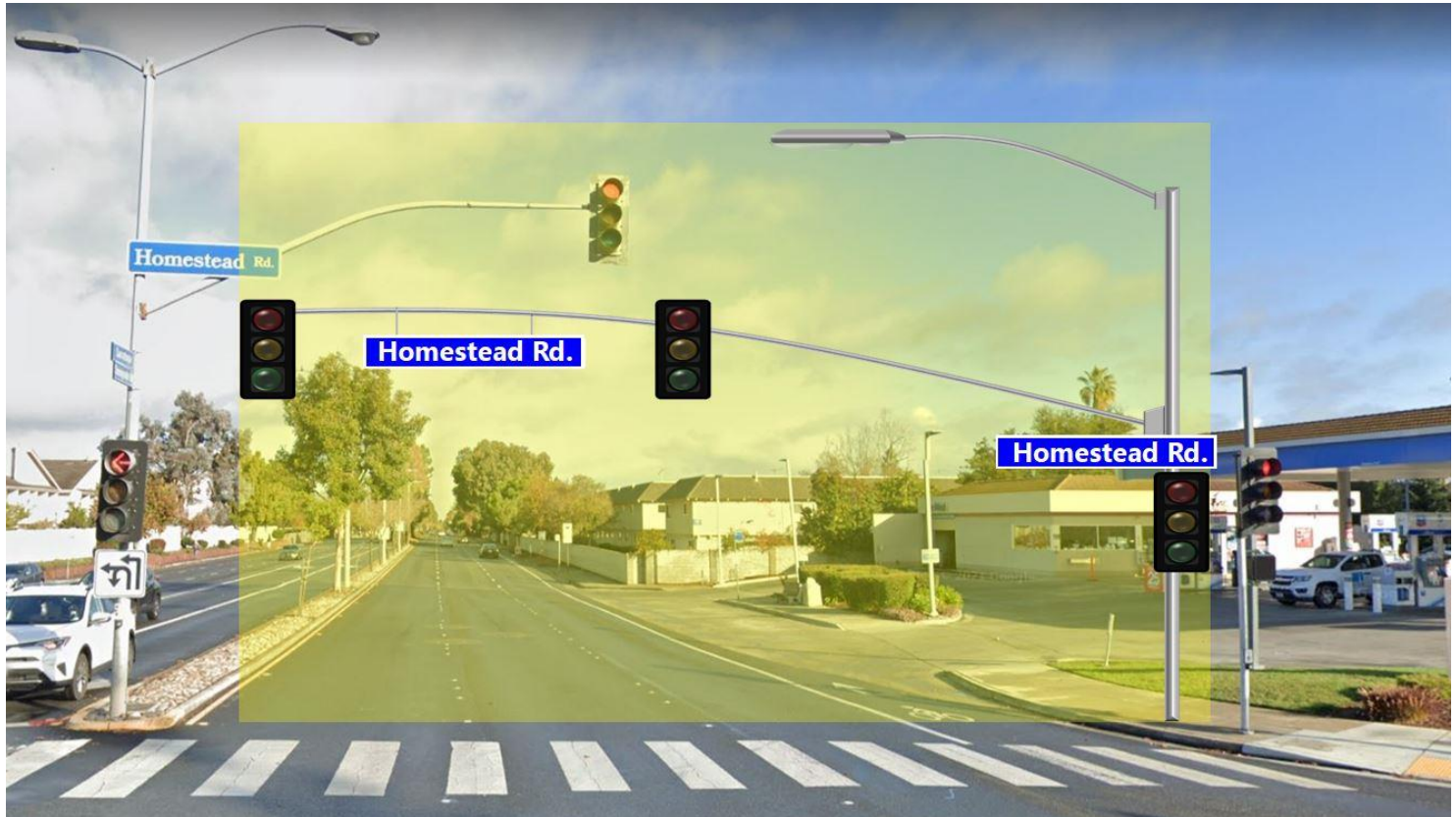


HIGH-RISK CORRIDORS

ID	Corridors
A	Stevens Creek Blvd: Janice Ave to Judy Ave
B	De Anza Blvd: Pacifica Dr to Homestead Rd
C	Homestead Rd: Fallen Leaf Ln to Wolfe Rd
D	Wolfe Rd: Homestead Rd to Pruneridge Ave
E	McClellan Rd: Imperial Ave to De Anza Blvd
F	Bubb Rd: Stevens Creek Blvd to 2,000 ft south of Stevens Creek Rd
G	Mariani Ave: Bandy Dr to Infinite Loop
H	Tantau Ave: Forge Dr to Pruneridge Ave
I	Blaney Ave: Pear Tree Ln to Stevens Creek Blvd
J	N Stelling Rd: Alves Dr to Greenleaf Dr



Example of Safety Improvement Project



We Need Help!!!

- Your input is essential for the success of the Local Road Safety Plan.
 - Report the areas of concern.
 - Provide feedback.
- Project Dashboard is live <https://engagecupertino.org/lrsp>



Thank You!!