

Cupertino Safe Routes to School

5 Year Plan

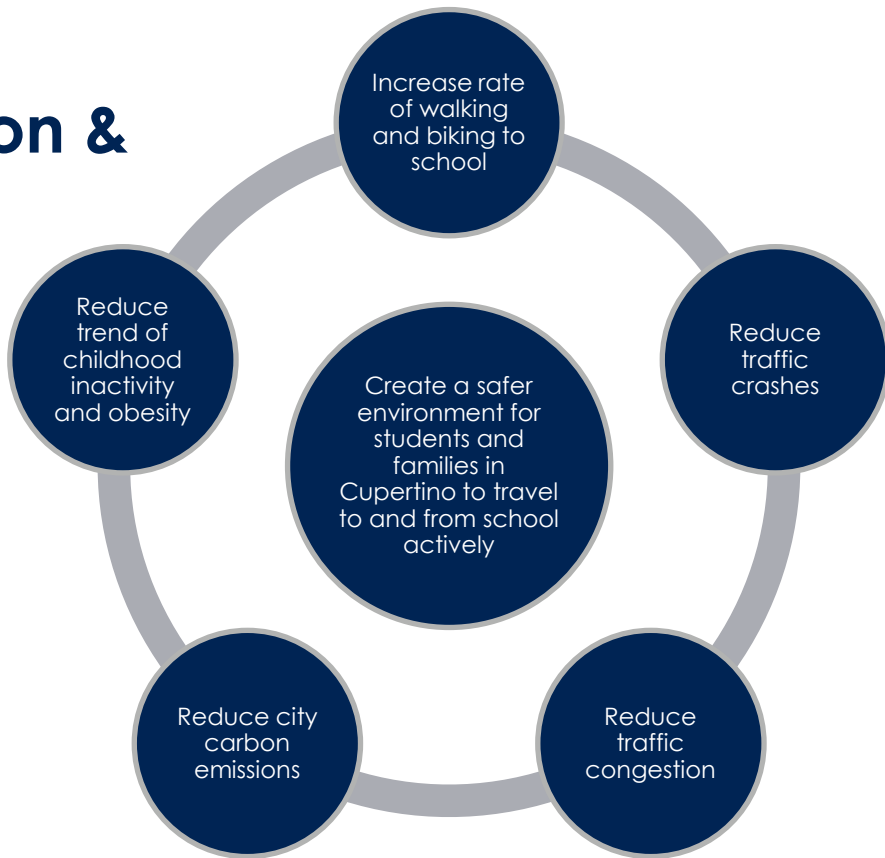
FY21/22 – FY25/26



Overview

- SR2S Mission and Goals
- Guiding Principals
- 7 E Projects: Existing & Future

Cupertino SR2S Mission & Goals



SR2S Guiding Principals

Normalize active transportation

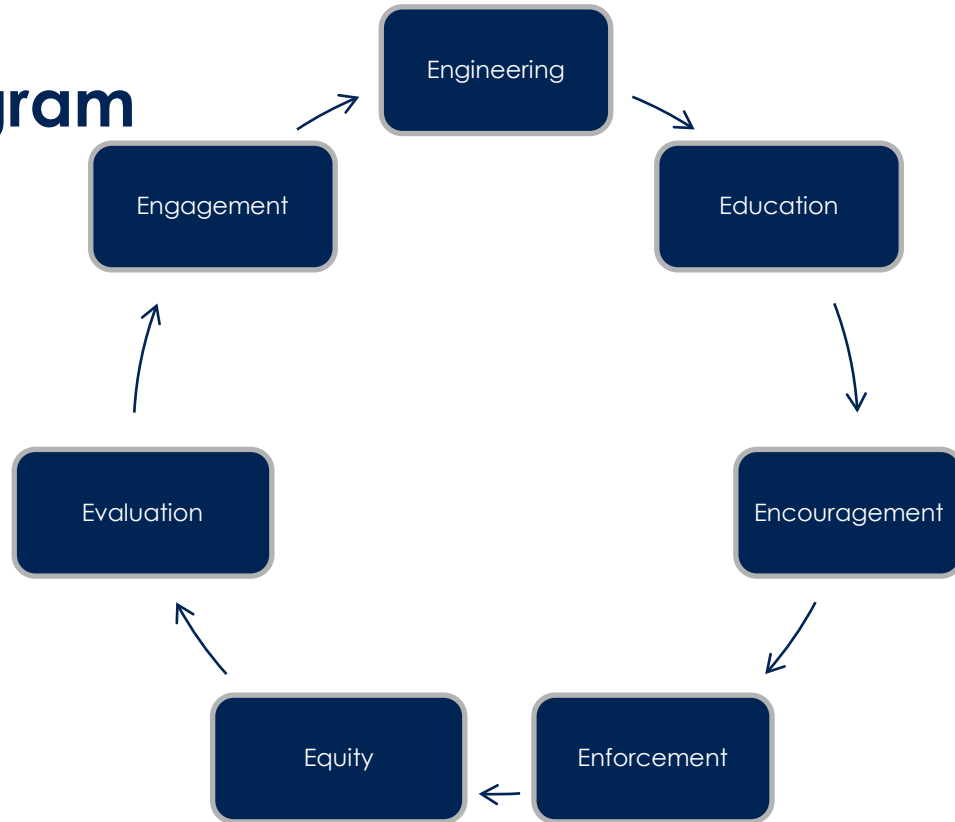
Include SR2S in standard school curriculum and city-wide project evaluation criteria

Concentrate on younger population since habits set early in life tend to continue

Aim to reach 100% of students at least once a year

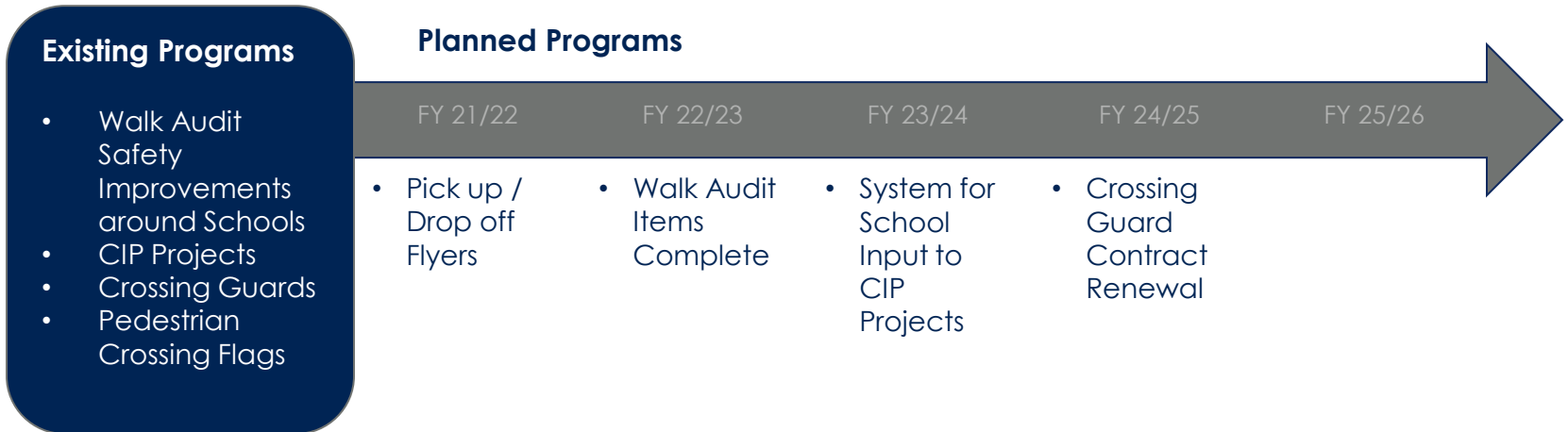
Set up infrastructure and funding so programs continue as automatically as possible

7 E's of a SR2S Program



Engineering

Objective: Engineer a safer and more efficient network of active transportation routes in the City



Education

Objective: Provide, continue, and enhance SR2S education programs for the schools and community

Existing Programs

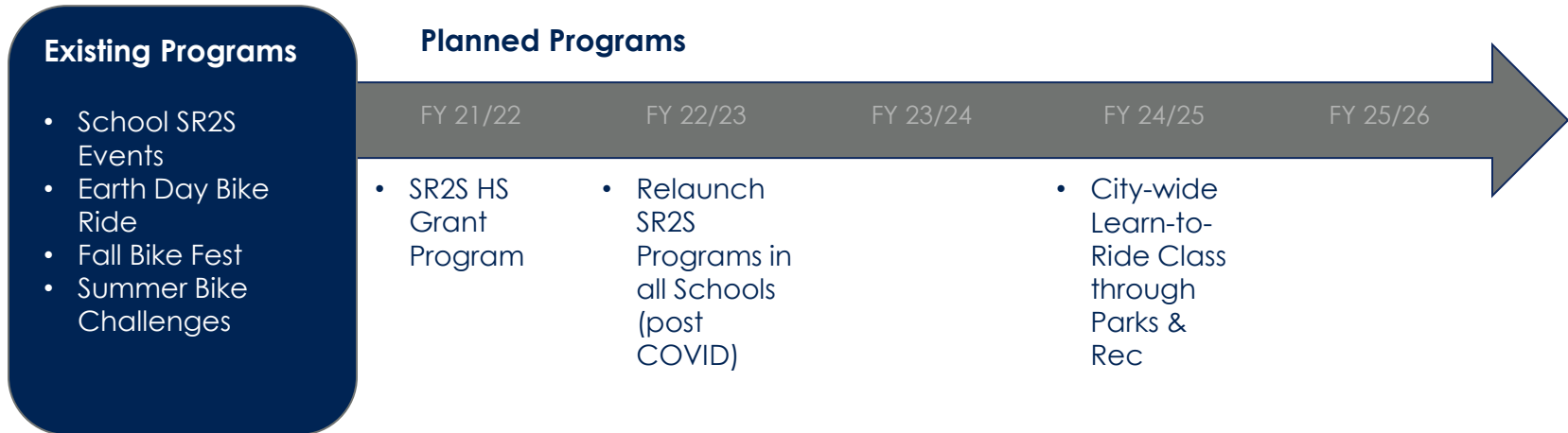
- SR2S Maps
- Gr2 Ped Ed Pilot
- Gr3-5 SRO Bike Safety Assembly
- ES Bike Rodeos
- MS Bike Clinics - summer & after school
- Citywide Bike Rodeo at Bike Fest

Planned Programs

FY 21/22	FY 22/23	FY 23/24	FY 24/25	FY 25/26
<ul style="list-style-type: none">• 2nd Grade Ped Ed• MS PE Bike Ed	<ul style="list-style-type: none">• Kinder Parades• 5th Grade Bike Rides to MS• SR2S Map App	<ul style="list-style-type: none">• 8th Grade Bike Rides to HS• Revisit SR2S Maps	<ul style="list-style-type: none">• HS Bike Week	<ul style="list-style-type: none">• ES In-Class Bike Rodeos

Encouragement

Objective: Self-sustaining annual SR2S programming at all schools and in the community



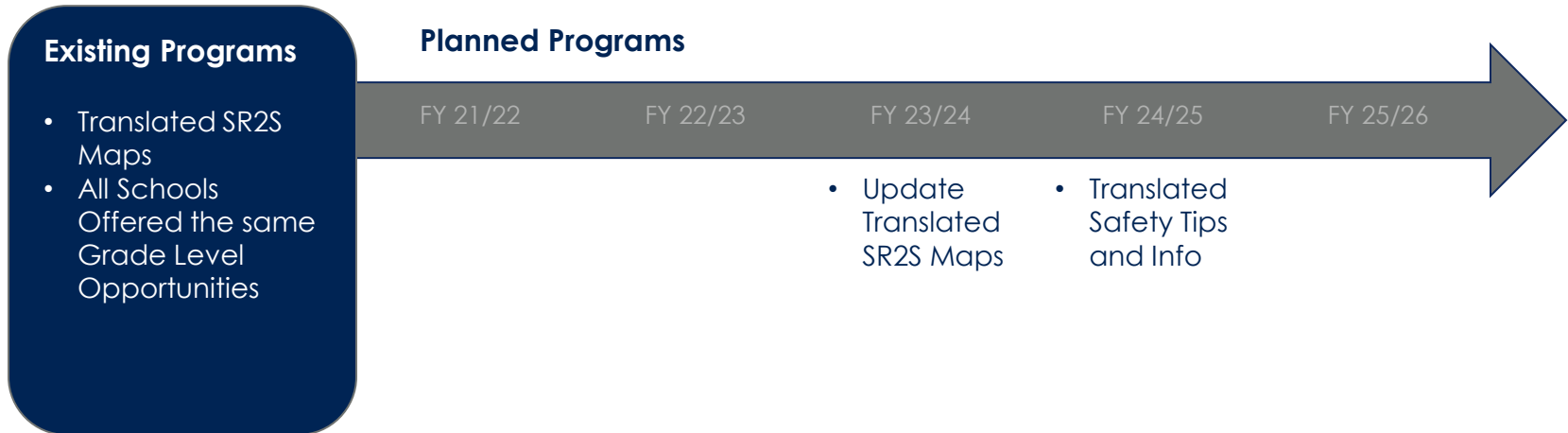
Enforcement

Objective: Seamless partnership to provide education and correction



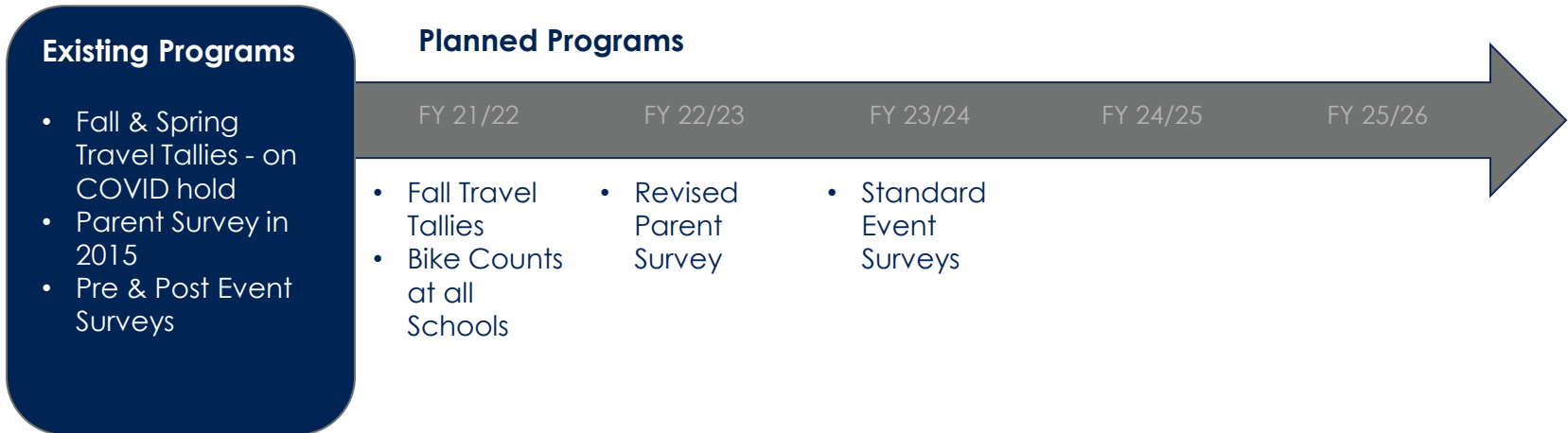
Equity

Objective: Standardized bike and pedestrian education in the regular curriculum



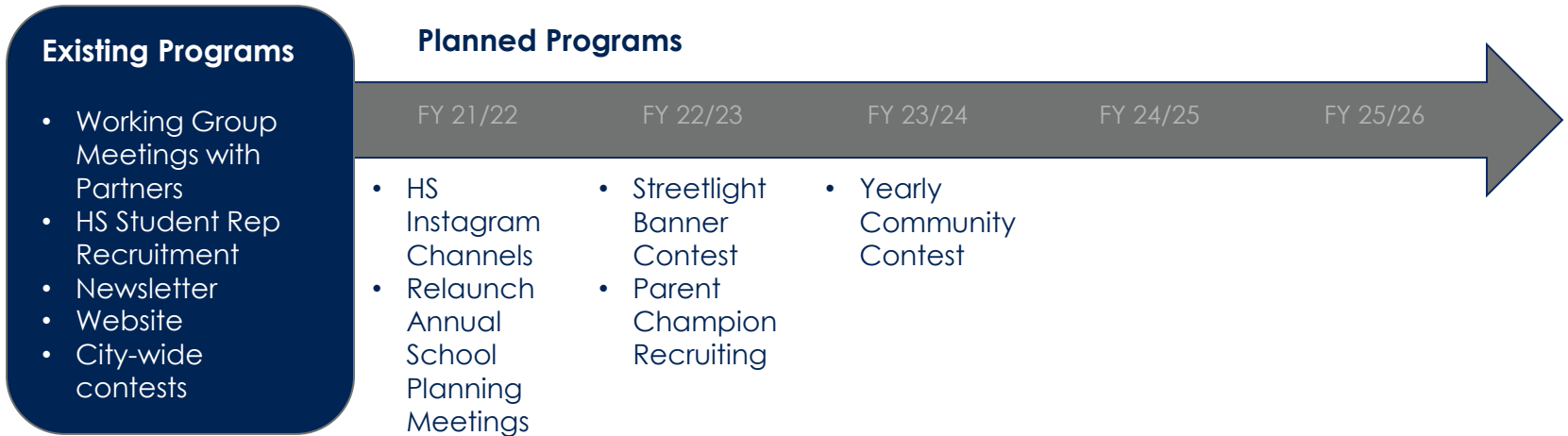
Evaluation

Objective: *Comprehensive SR2S data used to inform City and school decisions*



Engagement

Objective: Partner with City departments, schools and districts, and the community to further the SR2S mission and goals



Thank You



CUPERTINO