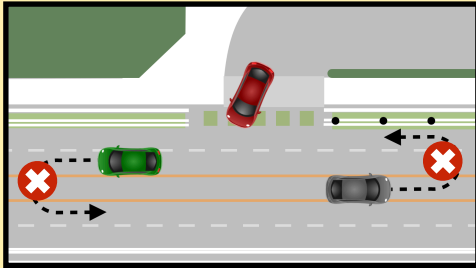




## Keep Students SAFE!

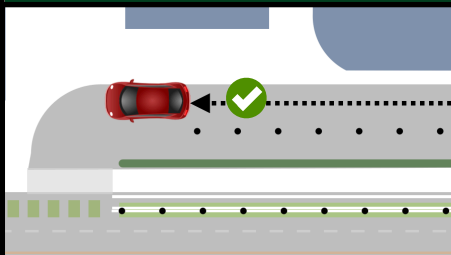


**U-turns** are **illegal** when any vehicle is approaching from any direction.

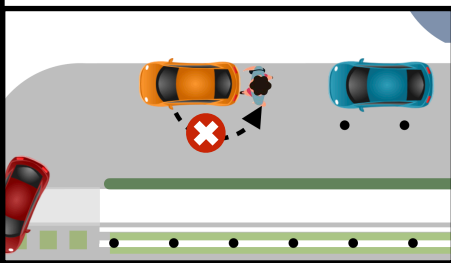
## Other Drop Off Options: Use These Streets



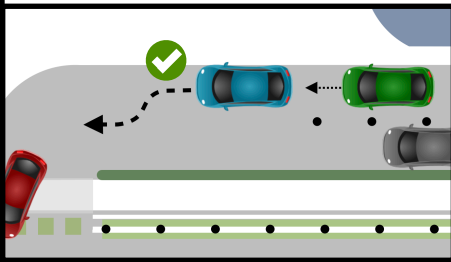
## Keep Traffic Moving



Pull all the way forward in the lane, **no matter how late your child is**. Pull forward to the next car before drop off.



Don't get out of your car. Don't get items out of your trunk. Have your child be ready to exit.



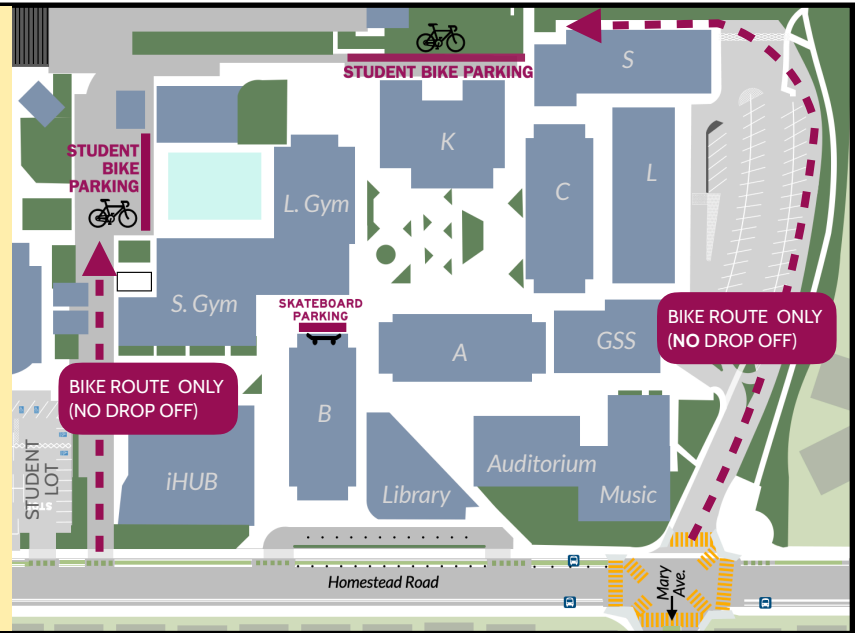
Pull away from curb when you are done dropping off to allow another car to move forward.



## BIKES, SCOOTERS & SKATEBOARDS

- Students must walk their bikes, scooters and skateboards on the campus.
- Cyclists are encouraged to enter the campus via the access road next to Student Lot exit.

**ALWAYS WEAR A HELMET!**



## YOU CAN:

- Avoid the traffic jams near school
- Increase your child's school success
- Save gas, money, and be more green



**HAVE YOUR CHILD WALK, BIKE, OR SCOOTER TO SCHOOL!**

