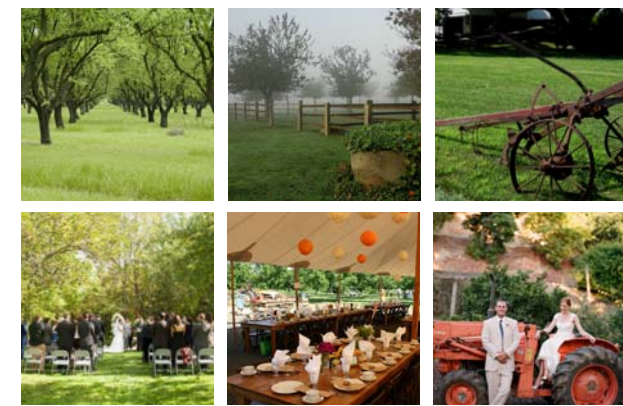


# DESIGN OPTION A

Option A is considered the highest intensity design alternative. As compared to the other two options, Option A is designed to encourage the highest degree of new visitor use, and would require the most environmental impact to the site. This is the only option that recommends removing the golf course in favor of adding two lighted, multi-purpose sportsfields. Other park features include expanded vehicular access from Stevens Creek Blvd; spaces and amenities for large events; large, custom pool and water play facilities; expanded community garden space; a variety of active play and exercise experiences; increased parking areas; and additional built structures including a new maintenance headquarters building. Site amenities such as restrooms, bike parking, picnic tables, benches, and waste/recycling receptacles will be sited throughout the park wherever appropriate.

## STOCKLMEIR RANCH



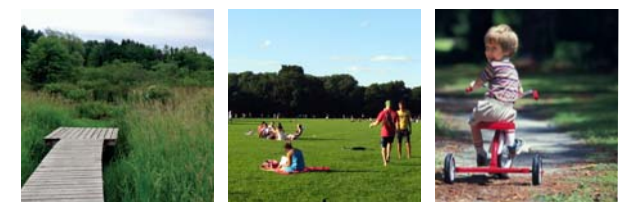
**ORCHARD GARDEN PARK:** Enhance historic orchard landscape to create a semi-formal garden park that responds to the site's agricultural heritage and is suitable for reflective walks, picnics, outdoor gatherings, and wedding photo opportunities.

**SPECIAL EVENTS VENUE:** Renovate house for public access and use interior, exterior patios, and surrounding landscape for weddings and special events. Include catering kitchen and restrooms.

**STAGING/STORAGE AREA:** Maintain garage and outbuilding as storage area for operations and maintenance and events equipment and maintain surrounding area as event staging space.

**PEDESTRIAN, BIKE, AND VEHICULAR CIRCULATION:** Existing Stevens Creek Trail traverses the ranch from north to south, accessed from three points: Stevens Creek Blvd to the northwest, the proposed bridge from the Ranch parking lot to the northeast, and the existing bike/pedestrian bridge to the south. The vehicular access bridge from the Ranch parking area is limited to maintenance and event service vehicles. Ranch visitors and event guests park in the lot and walk over the bridge. Small accessible parking areas are provided at both buildings.

## BLACKBERRY FARM WEST



**ENHANCED RIPARIAN AREA:** Restored riparian habitat with opportunities for wildlife viewing.

**GREAT LAWN:** Flexible green space for informal play, community events, and gatherings with picnic areas along shaded edges. Lawn area is composed of ecolawn mix or movable meadow grasses.

**PEDESTRIAN, BIKE, AND VEHICULAR CIRCULATION:** Access from the creek trail along the west edge, and from the pathway along the main entrance drive along the east edge. Vehicles approach from the main spine road and are served by linear parking lot to the east.

## WESTSIDE PICNIC AREA



**GROUP PICNIC AREA:** Existing picnic shelters with barbecues, picnic tables, and horseshoe pits.

**SYCAMORE GROVE:** Intact grove of large, native California Sycamores. Potential vegetation enhancement area.

**PEDESTRIAN, BIKE, AND VEHICLE CIRCULATION:** Existing bridge for bike/pedestrian and maintenance vehicle access. Served by parking areas at sportsfields and destination play area.

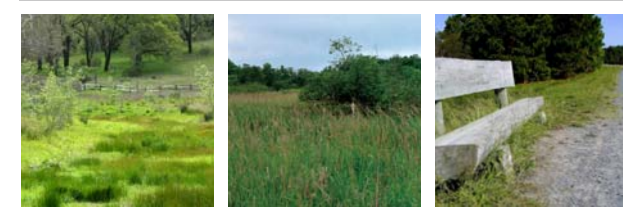
## CENTRAL CREEK CORRIDOR



**NATURAL AREA:** Riparian area with nature trails. Opportunities for wildlife viewing and quiet reflection.

**BIKE AND PEDESTRIAN CIRCULATION:** West side of the creek accessible by small, existing bridge at Scenic Circle entrance.

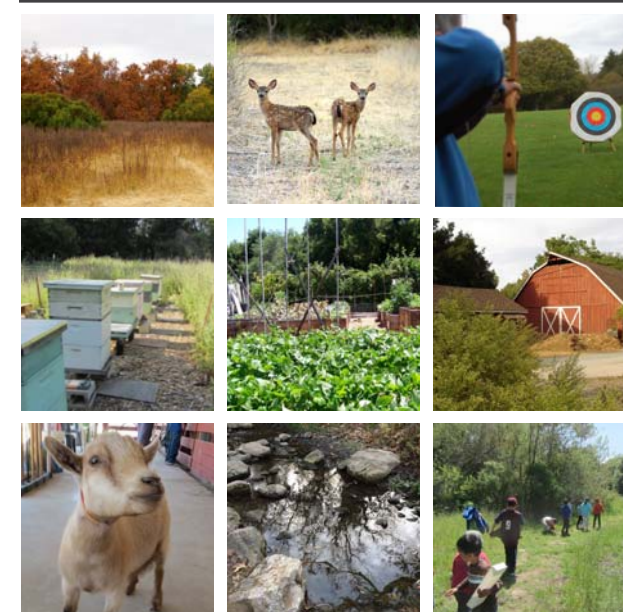
## RIPARIAN PENINSULA



**ENHANCED RIPARIAN AREA:** Enhanced/restored wetland habitat area. Opportunities for wildlife viewing and environmental education.

**BIKE AND PEDESTRIAN CIRCULATION:** Seasonal access from new footpath at Scenic Circle and from a small, temporary footbridge from McClellan Ranch. Pedestrian path provides visual access into habitat area.

## MCCLELLAN RANCH PRESERVE



**MEADOW:** Enhanced/restored meadow habitat areas on north and west sides of the site. Opportunities for wildlife viewing, and environmental education.

**EXPANDED COMMUNITY GARDEN:** Expanded and enhanced community garden area with 40+ garden plots, bee hive yard, upgraded irrigation, vegetable/hand washing station, possible picnic area, composting demonstration area, and new fencing.

**ENHANCED 4-H FACILITIES:** Improve 4-H area and amenities to support expanded programming.

**OUTDOOR SKILLS:** Space and amenities for learning and practicing outdoor skills, including wild food foraging, shelter building, wildlife track identification, wilderness first aid, orienteering, knot tying, and rope making.

**BARN:** Renovate and add history, nature, and science-based interpretive elements. Indoor space for educational and summer programs and livestock and ranch purposes.

**CREEK ACCESS:** Opportunity to access east side of creek near meadow and parking area.

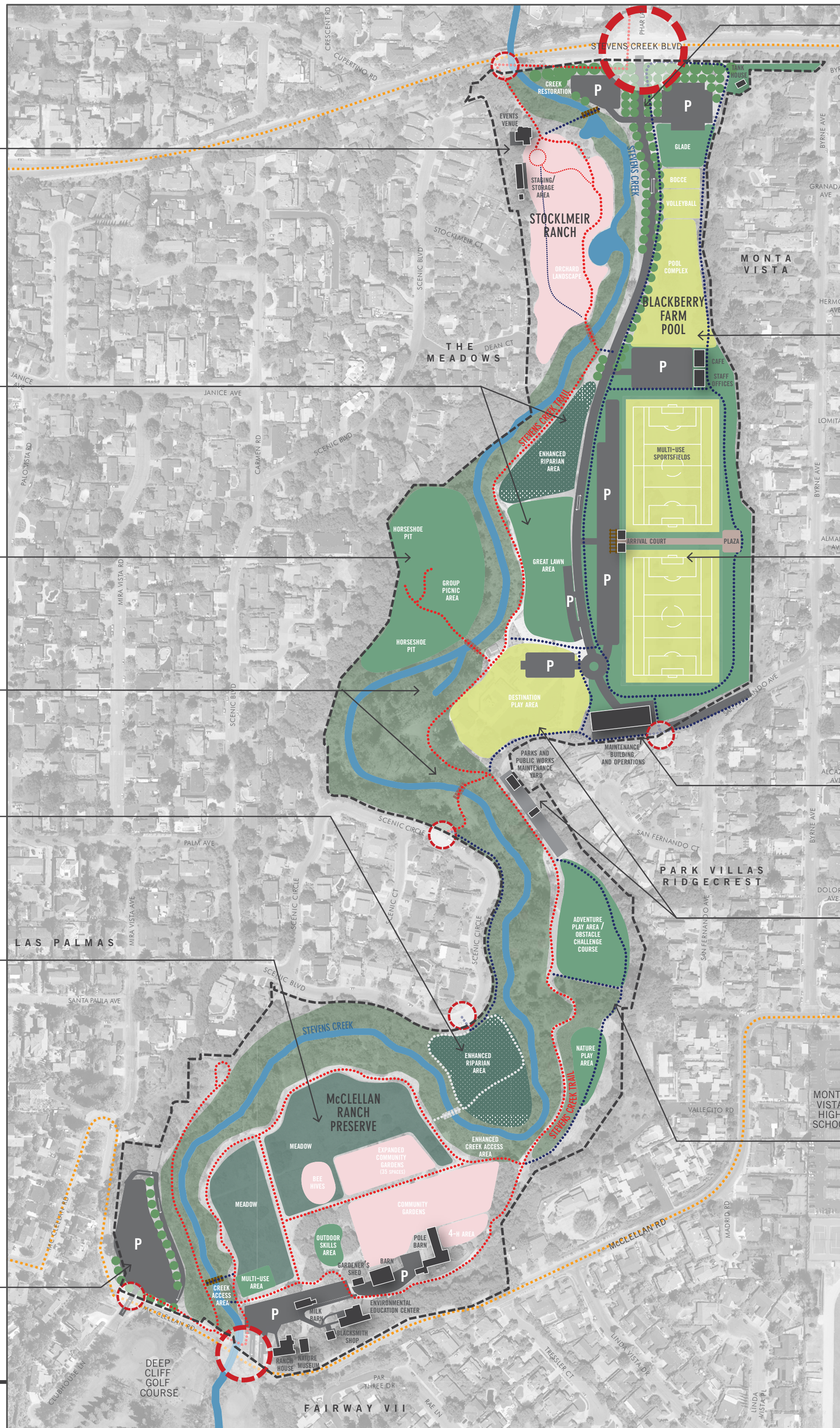
**ENVIRONMENTAL EDUCATION CENTER AREA:** Improve central gathering areas adjacent to buildings to support outdoor education, group visits, teaching, and events.

**PEDESTRIAN, BIKE, AND VEHICULAR CIRCULATION:** Improved pedestrian trails and pathways with access to meadow, community gardens, structures, and the greater park trail system. New bridge crossing provides improved access between McClellan Ranch Preserve and McClellan Ranch West. Improved parking surfaces occur within existing footprint. Additional parking in McClellan Ranch West.

## MCCLELLAN RANCH WEST

**PEDESTRIAN, BIKE, AND VEHICULAR CIRCULATION:** Path along west side of creek allows access into McClellan Ranch West. New bridge crossing provides improved route to McClellan Ranch Preserve. Large parking area with vehicular access at intersection with Clubhouse Lane and bus pull-through loop.

**STEVENS CREEK CORRIDOR**  
Master Plan



## STEVENS CREEK BLVD ENTRANCE



**GRAND PARK ENTRY:** Green space gateway to reflect park identity and character, with large shade trees, landscaping, identity and wayfinding signage, and visual access to the creek.

**STEVENS CREEK:** Repair and restore north side of creek bank at proposed parking area.

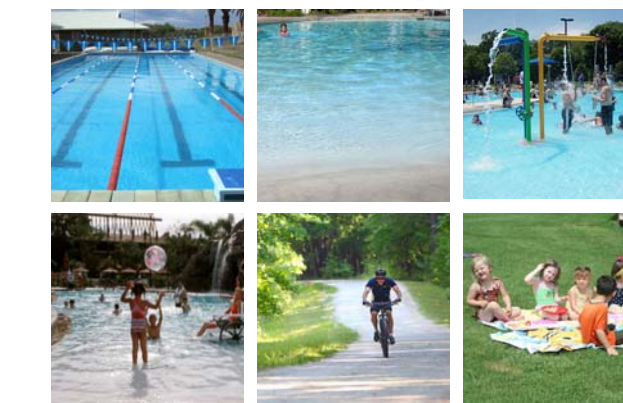
**GLADE:** A grassy meadow under the canopy of deciduous trees provides open, flexible green space available for everyday use or spillover events from the court sports.

**COURT SPORTS:** Bocce ball and turf volleyball/badminton courts at the south end of the glade.

**TANK HOUSE:** Exterior restoration of Nathan Hall Tank House with interpretive signage.

**PEDESTRIAN, BIKE, AND VEHICLE CIRCULATION:** Access points for pedestrian and bike loop trails that serve the park—featuring trail maps and interpretive signage. For vehicles, the main park entrance road from Stevens Creek Blvd creates a north-south spine for circulation and is lined with large shade trees in the style of a country estate drive. Parking areas are provided on the east and west sides of the entrance road.

## BLACKBERRY FARM NORTH



**DESTINATION POOL COMPLEX:** Expanded and enhanced swimming and water play facilities with year-round programming, moved away from existing footprint. Includes lap swim, sloped entry pool, spray play elements, lifeguard tower, and ADA improvements, as well as pool house with dressing rooms, lockers, showers, and restrooms. Also includes staff office.

**INDOOR/OUTDOOR EATING:** Café building with food service, eating area with picnic tables, open area, and space for temporary food truck service during events.

**STAFF OFFICES:** Building space for offices, meetings, and trainings.

**PEDESTRIAN, BIKE, AND VEHICLE CIRCULATION:** Area is accessible from bike/ped trail along the east edge, and bike/ped pathway along the main spine road to the west. Vehicular circulation is accessible from the main spine road, with a parking area to the south.

## BLACKBERRY FARM CENTRAL

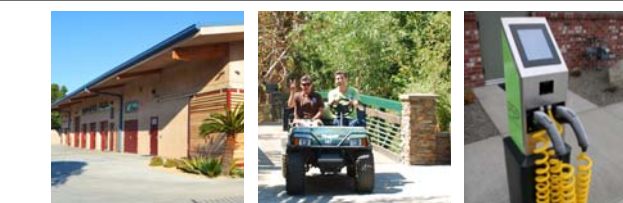


**MULTI-USE SPORTSFIELDS:** Two natural turf, multi-use, rectangular sportsfields suitable for practice and play. Lighted for evening use. Can also serve as large, open air event space for movies in the park, etc.

**ARRIVAL COURT:** buffer between the two sportsfields with arrival court that including restrooms and storage at the west end, and a small picnic plaza at the east end.

**PEDESTRIAN, BIKE, AND VEHICLE CIRCULATION:** Pedestrian and bike loop trail is located along the perimeter of the pool complex and sports fields. Large linear parking lot is located along western edge of fields and is accessible from main entrance road.

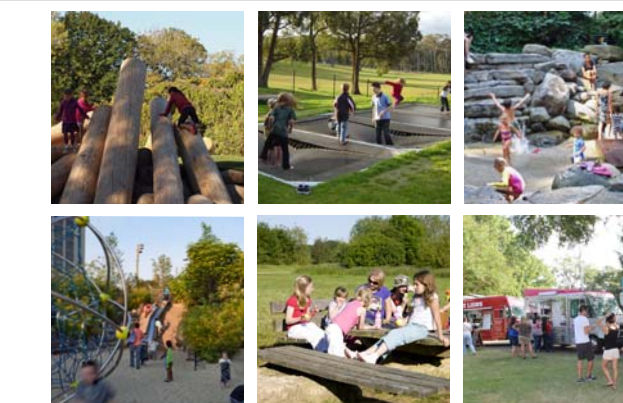
## SAN FERNANDO ENTRANCE



**MAINTENANCE BUILDING AND OPERATIONS:** New maintenance building in location of existing retreat center. Includes vehicle bays with charging stations, equipment storage, and restrooms.

**PEDESTRIAN, BIKE, AND VEHICULAR CIRCULATION:** Pedestrian and bike point of access for east side neighborhood users. Access road is for emergency, maintenance, and staff vehicles only.

## BLACKBERRY FARM SOUTH



**DESTINATION PLAY:** Large, custom play area with features such as climbing sculptures, walls, and structures; and water and sand play.

**OUTDOOR EATING:** Eating area with picnic tables and space for temporary food truck service during peak use times and events.

**MAINTENANCE YARD:** Existing maintenance facilities are upgraded for use by Public Works and Parks staff. Improvements include new electrical cart storage area and restrooms.

**PEDESTRIAN, BIKE, AND VEHICULAR CIRCULATION:** Pedestrian and bike access from bike/ped trail along the west edge, and from walking path along central spine road to the east. Small parking area located to the east side of the play area off the central spine road.

## EASTSIDE PARK AREA

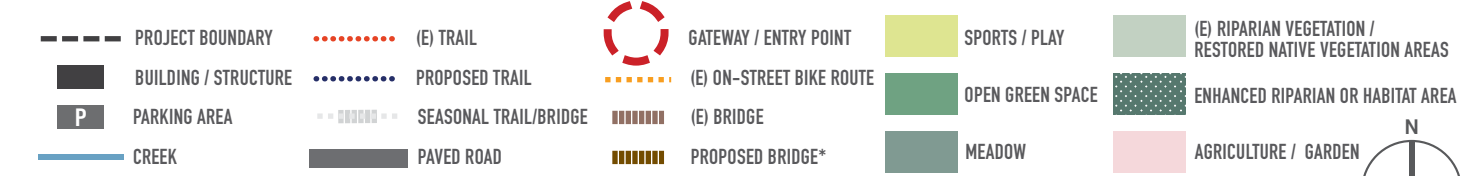


**OBSTACLE CHALLENGE COURSE:** A series of climbing, balancing, and teamwork elements, suitable for guided and unguided use by kids and adults.

**ADVENTURE PLAY:** Area for self-directed play with opportunities to imagine, experiment, and create. Elements include water, mud, and sand, parts and tools for building and dismantling, climbing boulders and trees. Designed and supervised to create a safe space for risk-taking, limit-testing, and trial-and-error activities.

**NATURAL PLAY AREA:** Custom designed play area for open-ended, sensory play, built with natural materials like sand, wood, and boulders. Opportunities to connect play and learning in a natural environment.

**BIKE AND PEDESTRIAN CIRCULATION:** Pedestrian/bike access from perimeter loop trail.



\*pending SCWO approval

